

scanning

archiving

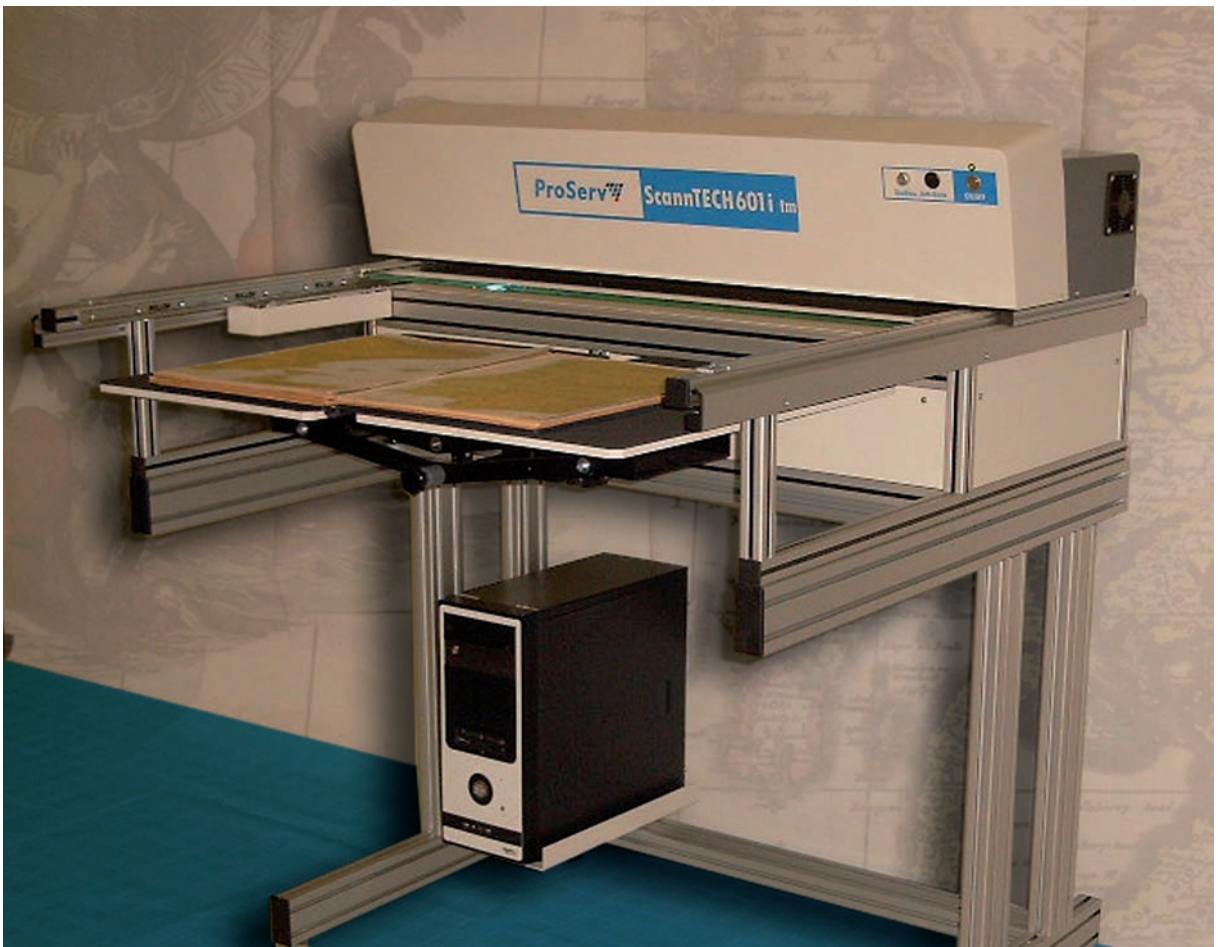
capturing

copying

microfilming

ScannTECH 601i tm

High performance Scanner A1



Quality makes the difference

- Scan quality with high optical resolution
- Highest scan accuracy
- Ergonomically formed system
- Powerful software for scanning and processing
- LED-lighting system
- Quick scan times

ProServ

ScannTECH 601i tm



Flexible, versatile and efficient

There are two versions of the A1-scanner ScannTECH, with the optical resolutions of 400 dpi and 600 dpi! The scanner reaches these real 400 dpi and 600 dpi for the length and the width.

This is a range of possible applications. Scanning of books and atlases, newspapers and magazines, documents with a seal, maps and drawings, bound and clamped masters.

High optical resolution

The A1-scanner reaches excellent colour rendering and scan sharpness for the entire length and width of the master, to the furthest bordering regions. The optical resolution is done with 400 dpi or 600 dpi, depending on the type.

Highest Scan accuracy

On the basis of the scan technology used by us - the scanner moves in an equal distance over the master - the scanning is particularly precise and reaches an extraordinarily geometric precision of 0.1 %. It is an ideal scanner to scan plans and ground plans from land register and surveying.

Ergonomical designed

Ergonomics also means for ProServ-scanners to scan at normal daylight. Your employees will appreciate that!



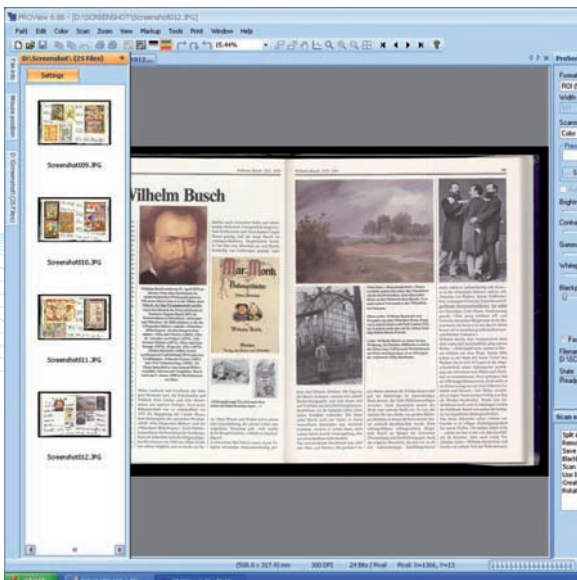


High performance software

The powerful software PROView for scanning and processing makes the A1-scanner (and all other ProServ-scanners) a user-friendly scanner. The software with an easy and intuitive user interface supports the scan processes comfortably and optimizes the scan productivity by these functions (as per following selection):

LED Lighting System

The new LED-lighting system has no UV/IR-radiation and becomes switched-on only during the scanning.



Short Scan cycle

Apropos scan times: The scan cycle is of much more importance for you. That is the pure scan time plus the time of data transfer. The scan cycle will convince you.

**ScannTECH 601i tm
for patterns up to A1**



Secure work

Last but not least! Quality makes the difference. This is also true with service and support!

The scan system is reliable and stable. That secures you a great availability of the system. Above that, our technical team renders first-class service and support to maintain this great availability. Our expert team stands for preventive service and support of quick response.

**Developed in Germany,
manufactured in Germany at Karben, near
Frankfurt/M.**



Technical data	ScannTECH 601i tm
Optical resolution	600 dpi/optionally 400 dpi
Active Scanning width and length	91,4 cm/60 cm
Software	PROView with powerful image processing tools Optionally: calibrating and colour management, copying, word recognition
Scanning accuracy	0,1 % plus a digital rounding error +/-1 pixel
Exposure and optics	LED Lighting System, no UV/IR-radiation apochromatic lenses
Colour and image processing	Gamma, brightness and contrast (for each colour channel) White point and black point
Functions	Automatic or manual black-treshold correction Automatic whitebalance
Page splitting	Automatically, with or without overlap
Depth of colour	36 bit internal / 24 bit external
Depth of focus	3 cm
Foot switch	For operating the book cradle and releasing the scanning
Lowering the book	Automatically or manually
Thickness of master	10 cm, others on demand
Output modes	24-bit-RGB-colours 8-bit-grey scale Bitone and bitone photo
Interface	TCP-IP
Data output	All standard image formats
CCD-cameras	3 cameras with 7,500 pixels each colour
Dimensions (L x W x H)	113 cm x 113 cm x 50 cm
Surrounding conditions and current consumption	5~30° C, 15~85 % relative humidity, non-condensing 200~250 VAC (automatical recognition), 47~63 Hz, 250 VA
Minimum PC-requirements	Working memory 2,048 MB, GBit-Ethernet connection Up-to-date Intel/AMD-CPU, minimum requirements Windows XP

* Technical specification subject to change

ProServ

ProServ GmbH
Robert-Bosch-Straße 2-4
D-61184 Karben

Fon +49 (0)6039 4803-0
Fax +49 (0)6039 4803-80
Mail info@proservgmbh.de

www.proserv-special.de